



RoHS compliant

## Industrial 5/6-Port Unmanaged Ethernet Switches

■ ■ EH2005/EH2006

EH2005-Fm (Multi-mode)



EH2005-Fs (Single-mode)



EH2006

### Technology

- 10/100BaseT(X) (RJ45), 100BaseFX (SC/ST connector)
- Broadcast storm protection
- Support IEEE 802.3/ 802.3u/ 802.3x
- 10/100M, Full/Half-Duplex, MDI/MDI-X auto-detection
- Local area transmit distance of 2 km with Multi-mode Fiber connections
- Long-haul transmit distance of 20 km with Signal-mode Fiber connections

### Reliability

- Redundant dual DC power inputs
- Operating temperature ranges from 0~60°C
- Rugged high-strength case
- DIN-Rail or wall mounting ability
- Alarm out for power and link failure

The EH Series include 5/6-port Ethernet switches that provide two solutions, one with 6 RJ-45 ports and the other with 4 RJ-45 ports and one optic ST/SC port for your industrial applications. These EH series have been designed for industrial environments, such as in hazardous locations that comply with FCC, TUV, UL, and CE standards.

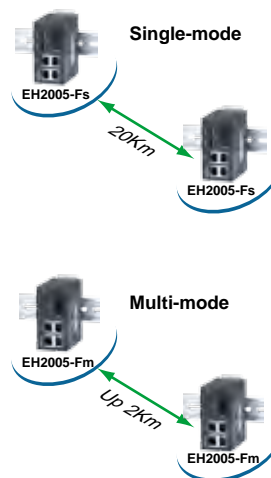
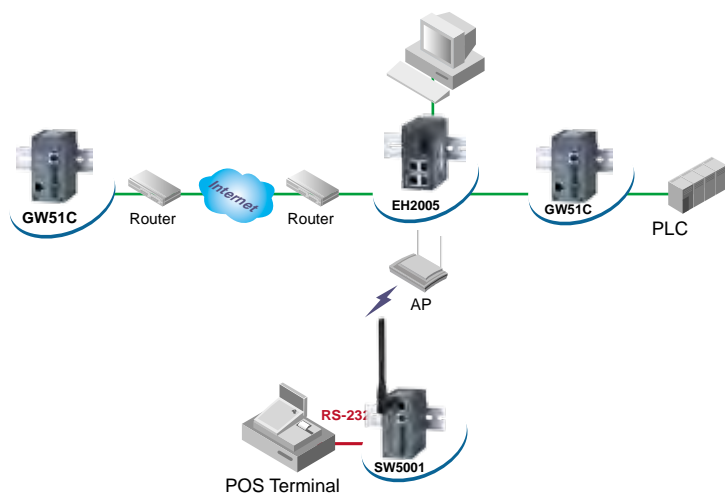
EH series protect itself from receiving too many broadcast packets. During normal use, broadcast packets will be forwarded to all ports except the source port. However, EH series will discard broadcast or multicast packets if the number of those packets exceeds a threshold in a preset period of time. When the preset period expires (about 800ms), it will then resume receiving broadcast or multicast packets until the threshold is reached again.

EH series provide two redundant power inputs that can be connected simultaneously to wide-range DC power sources. If one of the power inputs fails, the other live source acts as a backup to provide the EH series' power needs automatically.

# Industrial 5/6-Port Unmanaged Ethernet Switches

 EH2005/2006

Specifications	
<b>Technology</b>	Standards: IEEE802.3, 802.3u, 802.3x Processing Type: Store and Forward Flow Control: IEEE802.3x flow control, backpressure flow control
<b>Ethernet</b>	RJ45 Ports for 10/100BaseT(X) auto negotiation speed Full/Half-duplex mode, and auto MDI/MDI-X connection
<b>Optical Fiber</b>	<b>Multi-mode</b> ST connector for 100 Base FX port Distance: up to 2Km Wave-length: 1270~1350 nm Sensitivity: -33dBm (Typical) <b>Single-mode</b> SC connector for 100 Base FX port Distance: up to 20Km Wave-length: 1260~1300 nm Sensitivity: -34dBm (Typical)
<b>LED Indicators</b>	Power, 10/100M, Data, Alarm
<b>Power Requirement</b>	Input Voltage: 9~30 VDC, Dual inputs Input Current (@24V): 0.35A Connector: Removable 3-pin Terminal Block for power input Reverse Polarity Protection: Present
<b>Mechanical</b>	Casing: IP40 protection, plastic case
<b>Temperature</b>	Operation: 0°C~60°C (32~140°F), Storage : -40°C~85°C (-40~185°F)
<b>Humidity</b>	5%~95% non-condensing
<b>Dimension</b>	45mm x 91mm x 80mm (W x Hx D)
<b>Weight</b>	160g
<b>Regulatory Approvals</b>	Safety: UL, CUL EMC: FCC Class A, CE Class A
Ordering Information (by Model)	
EH1005-Fm: Embedded Type, 4 10/100BaseT(X) ports, 1 multi-mode, 100BaseFX port, ST connector	
EH1005-Fs: Embedded Type, 4 10/100BaseT(X) ports, 1 single-mode, 100BaseFX port, SC connector	
EH2005-Fm: Plastic Housing, 4 10/100BaseT(X) ports, 1 multi-mode, 100BaseFX port, ST connector	
EH2005-Fs: Plastic Housing, 4 10/100BaseT(X) ports, 1 single-mode 100BaseFX port, SC connector	
EH1006: Embedded Type, 6 10/100BaseT(X) ports	
EH2006: Plastic Housing, 6 10/100BaseT(X) ports	
Optional Accessories	
AD15-24C (US): AC100V~240V/DC24V, US adapter	
AD15-24D (EU): AC100V~240V/DC24V, EU adapter	



## Atop Technologies, Inc.

TEL : +886-3-5508137  
FAX : +886-3-5508131  
sales@atop.com.tw  
http : //www.atop.com.tw

Design and specification are subject to change without notice.  
All other product names referenced herein are registered trademarks of their respective companies.



CAEH2005\_E : v1-060214