



Industrial 6-Port Unmanaged Fast Ethernet Switch

■ ■ EH2306

RoHS compliant

Technology

- 10/100BaseT(X) (RJ45)
- Broadcast storm protection
- Support IEEE 802.3/ 802.3u/ 802.3x
- 10/100M, Full/Half-Duplex, MDI/MDI-X auto-detection

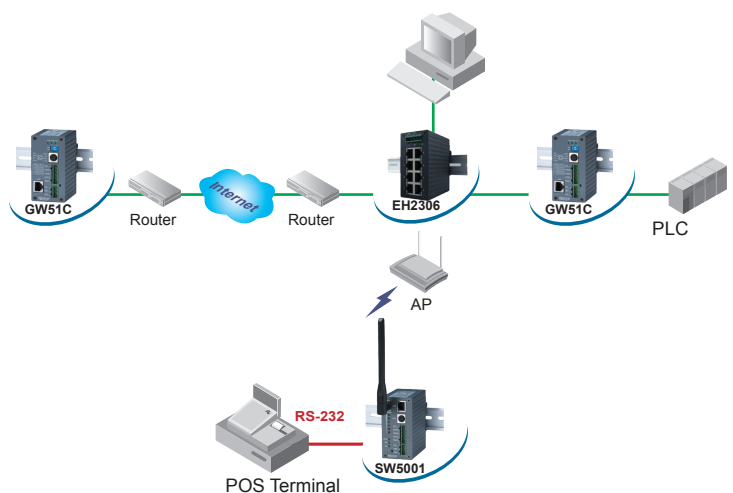
Reliability

- Redundant dual DC power inputs
- Operating temperature ranges from -10~70°C
- Rugged high-strength housing
- DIN-Rail or wall mounting ability

The EH2306 with 6 RJ-45 ports has a metal housing and is designed to work in the industrial environment, such as in hazardous locations that comply with CE, FCC, UL and RoHS standards.

The EH2306 protects itself from receiving too many broadcast packets. During normal use, broadcast packets will be forwarded to all ports except the source port. However, it will discard broadcast or multicast packets if the number of those packets exceeds a threshold in a preset period of time. When the preset period expires (about 800ms), it will then resume receiving broadcast or multicast packets until the threshold is reached again.

The EH2306 provides two redundant power inputs that can be connected simultaneously to wide-range DC power sources. If one of the power inputs failure, the other live source acts as a backup to provide the EH2306 the power it needs automatically.



Industrial 6-Port Unmanaged Fast Ethernet Switch

 EH2306

Specifications

Ethernet

Transmission rate	10/100Mbps
Ports	6
10/100Mbps	6
Connector	RJ-45 x 6
Auto MDI/MDI-X	Yes

Power

Input	DC 9~30V
Connector	Dual 3-pin 5.08mm pitch Terminal block
Consumption	4.5 Watts Max

Environment

Operating	-10°C ~ 70°C (14°F ~ 158°F)
Storage	-40°C ~ 85°C (-40°F ~ 185°F),5%~95% RH

Notes:

For UL policy the maximum operating temperature is 50°C, and the human body can tolerate maximum temperature is 70°C.

Dimension

W x H x D	45.2mm x 90mm x 78mm
-----------	----------------------

Approval

UL(Safety): UL60950-1,CSA C22.2 No.60950-1-03

FCC(EMI): FCC 47 CFR Part15, Subpart B, Class A

ICES-003, Class A

ANSI C63.4-2003

CE(EMI): EN 55022:1988+A1:2000+A2:2003, Class A

EN 61000-3-2:2000, Class A

EN 61000-3-3: 1995+A1:2001

CE(EMS): EN 55024:1998+A1:2001+A2:2003

IEC 61000-4-2:2001

IEC 61000-4-3:2002+A1:2002

IEC 61000-4-4:2004

IEC 61000-4-5:2001

IEC 61000-4-6:2003+A1:2004

IEC 61000-4-8:2001

IEC 61000-4-11:2004

Shock: IEC 60068-2-27

Free Fall: IEC 60068-2-32

Vibration: IEC 60068-2-6

RoHS: Lead(Pb) Free

MTBF: 455736 hrs(25°C) / 52.02 years(25°C)

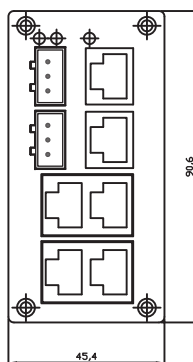
Warranty: 5 years

Optional Accessories

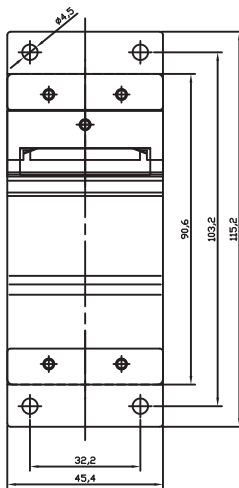
Power adapter	US315-12(US/EU):
	AC100~240V/DC12V 5.08mm pitch Terminal block

Ordering information

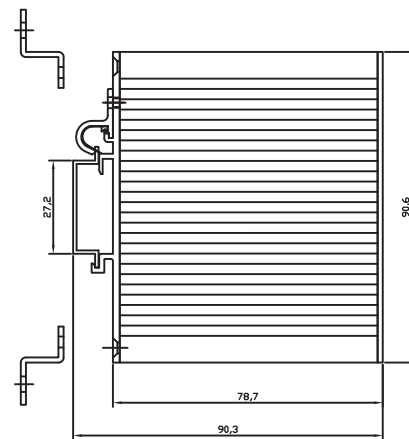
1P1EH230600001G	Industrial 6-port Unmanaged Fast Ethernet Switch with
EH2306	6x 10/100TX



Front-panel front view



Backboard rear view



(Mount kit)

Housing side view

Atop Technologies, Inc.

TEL : +886-3-5508137

FAX : +886-3-5508131

sales@atop.com.tw

http://www.atop.com.tw

Design and specification are subjected to change without notice.

All product names referenced herein are registered trademarks of their respective companies.



CA_EH2306_E : v3-0110120